

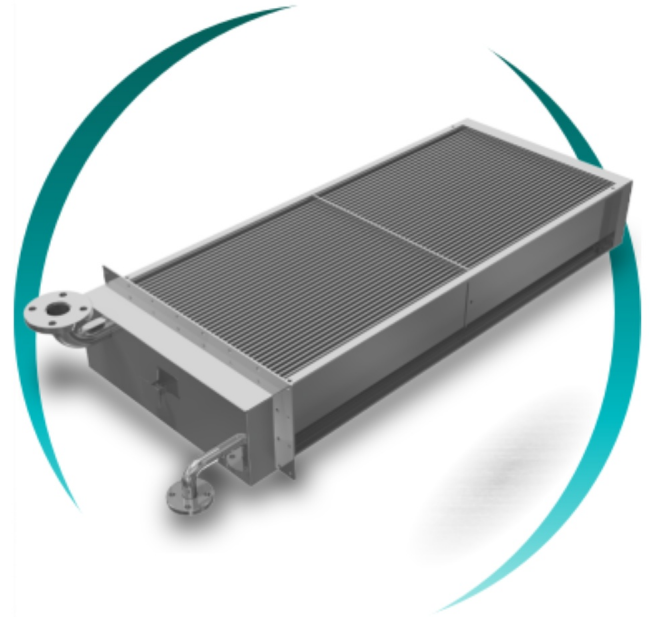
# Flat tube exchanger

Oblong coil with low dead angle



Flat-tube coil with an oblong section that, compared with circular-tube exchangers, reduces the rear dead angle of the tubes, minimising stagnation zones and improving the overall heat-exchange coefficient. An extraordinarily compact and efficient solution for working as a gas-to-gas or gas-to-liquid heat exchanger.

It is used in energy, oil and gas, food and beverages, agriculture and greenhouses, chemical, heavy industry, naval, HVAC, refrigeration, treatment, transport and marine plants. The oblong format provides a lower pressure drop than circular tubes, making it ideal for installations with pressure-drop limitations. The PS-Snake models allow efficiency to be improved in applications where the available space is very limited. Made with specially selected materials to provide strength and durability for each specific project.



## TECHNICAL SPECIFICATIONS

Tube section	Oblong (flat)
Pressure drop	Lower than circular tubes
Dead angle	Minimal
Exchange coefficient	Higher than circular tubes
Application	Gas-gas or gas-liquid
Models	PS-Snake (tight spaces)
Materials	Selected per project

**Oblong**

low-dead-angle  
section

**Δ DTML**

high performance  
in little space

**Low dP**

lower pressure  
drop