

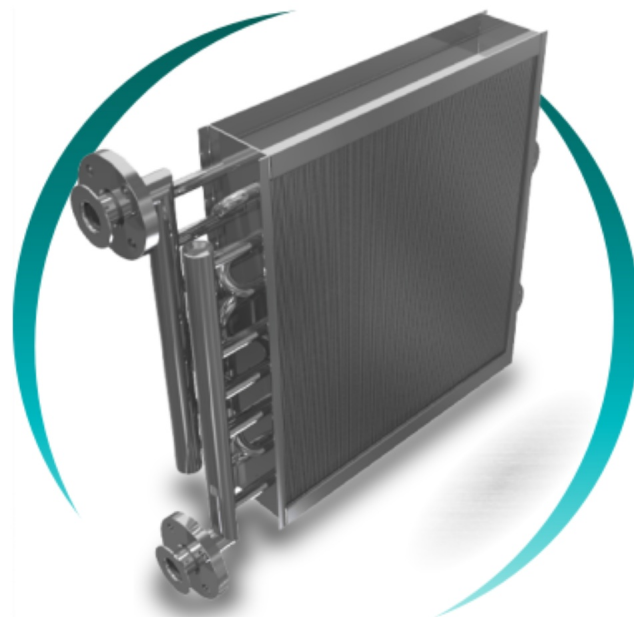
Tube and fin exchanger

Air-fluid coil with continuous fin



Very compact equipment for heat transfer between air or gas and an internal fluid —water, glycol, steam or thermal oil—. The tubes are mechanically expanded against the fins, ensuring a high heat-exchange coefficient and great structural robustness. The continuous fin maximises the contact surface on the air side, which is usually the thermal bottleneck of the system.

It is used in industrial HVAC, refrigeration, air and gas treatment, energy recovery, dryers, industrial boilers, cogeneration, industrial kitchens, paint booths and dehumidifiers. Available in steel, stainless steel, copper, aluminium, cupronickel and titanium. All equipment undergoes pressure testing in accordance with the European Pressure Equipment Directive 2014/68/EU. Ideal both for replacing existing equipment and for new projects where the installer needs to adapt to specific dimensions.



TECHNICAL SPECIFICATIONS

Fin type	Continuous (mechanically expanded)
Gas-side fluid	Air, process gas
Internal fluid	Water, glycol, steam, thermal oil
Tube materials	Cu, stainless steel, Cu-Ni, titanium
Fin materials	Aluminium, Cu, steel, stainless
Standard	PED 2014/68/EU
Connections	Threaded, flanged, direct welding

PED

Directive
2014/68/EU

Custom

replacements and
new projects

Δ DTML

large area in little
space